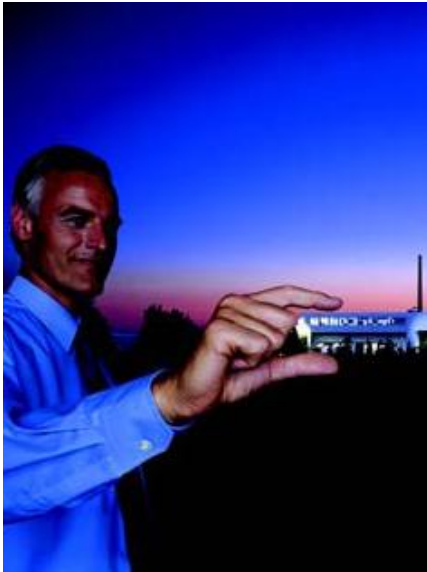


Planning, Design and Management with SIMARIS

18



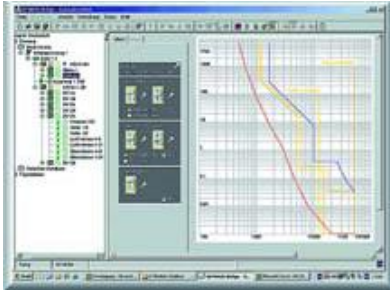
18/2	Introduction
18/3	SIMARIS design
18/4	Switch ES Power
18/5	SIMARIS manager

Planning, Design and Management with SIMARIS

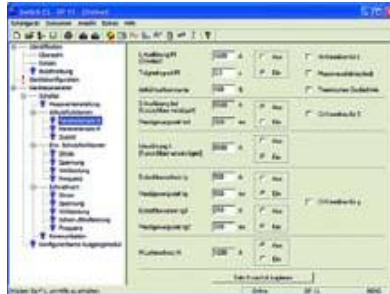
Introduction

Overview

Products at a glance



SIMARIS design



Switch ES Power



SIMARIS manager

SIMARIS design

Dimensioning tool for the quick and effective planning and calculation of power distribution for non-residential and industrial buildings.

- Dimensioning on the basis of real products according to acknowledged technical rules and standards
- Integrated product database, updating by download
- Easy implementation and modification in the planning and realization concept
- Reduction of routine work

Switch ES Power

Shared software platform for the device-specific program versions of the communication-capable controls.

- Clear representation of all available parameters
- All the available status information and measured values are displayed in dialog boxes
- Software for SENTRON WL and SENTRON VL

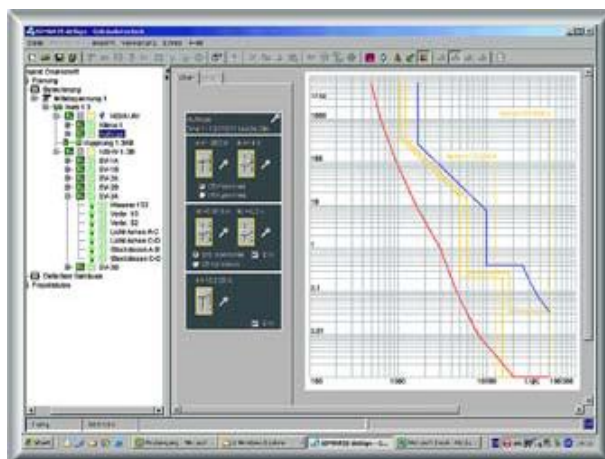
SIMARIS manager

Throws light on power flows - from infeed through distribution to loads - in order to permanently reduce the operating costs of power distribution systems.

- Central overview of all the power flows in a power distribution system
- Knowledge of the demand profile from the continuous acquisition of power data
- Detailed information about the amounts and costs of power consumed

Overview

SIMARIS design



SIMARIS design is a dimensioning tool for the quick and effective planning and calculation of power distribution for non-residential and industrial buildings.

In the planning phase already, the complete circuit can be dimensioned on the basis of real products. This avoids additional costs due to uncoordinated systems in the implementation phase. The right components and distribution systems for the case in question are selected automatically. The latest product data are saved in SIMARIS design and can be downloaded from our homepage on the Internet.

Every configuration of the electric power distribution is subject to frequent change and adaptation in the implementation phase as well as in the planning phase. SIMARIS design incorporates each change into the supply concept and automatically checks its reliability in terms of the regulations and standards currently in force.

Even the verification of selectivity, for example for elements of the safety power supply, can be simply and demonstrably performed with SIMARIS design. All these steps are precisely documented in SIMARIS design.

More information can be found on the Internet at:
<http://www.siemens.com/simarisdg>

Benefits

- Dimensioning on the basis of real products according to acknowledged technical rules and standards
- Easy-to-operate Windows interface
- Integrated product database, updating by download
- Detailed knowledge of products and systems not required
- Easy implementation and modification in the planning and realization concept
- Detailed parts lists with exact product descriptions
- Comprehensive documentation with simple data transfer (Office, CAD etc.)
- Clear-cut presentation of changes with specification of the revision date
- Reduction of routine work
- Easy adaptation to changes in use or expansions
- Direct adoption of planning results into the tender
- Easy comparison of installation quotations

Planning, Design and Management with SIMARIS

Switch ES Power

Overview

General

Switch ES serves as a shared software platform for the device-specific program versions of the communication-capable controls. Among other things, this has the advantage that all device-specific program variants are identical in terms of appearance and handling.

Switch ES Power

Switch ES Power can be used to configure, operate and monitor the SENTRON WL and SENTRON VL circuit-breakers through PROFIBUS DP.

Benefits

- Clear representation of all available parameters
- All the available status information and measured values are displayed in dialog boxes
- Software for SENTRON WL and SENTRON VL
- Easy connection build-up through acyclic PROFIBUS DP-V1 data traffic
- No programming is required for operation
- Identical storage format for BDA parameters

Object manager of Switch ES Power

- Uniform data management for circuit-breaker parameters
- Automatic parameterization if components are replaced

Selection and ordering data

Version	DT	Order No.	Price per PU	PU (UNIT, SET, M)	PS*	PG	Weight per PU approx. kg
Switch ES Power Calibration, operation, monitoring, and diagnostics of SENTRON WL/VL circuit-breakers through PROFIBUS DP; runs under Windows 95/98/NT/2000/XP Professional, including online help, the language can be switched between German and English; including Object Manager (OM) for Switch ES Power for integration in STEP7 <u>System requirements:</u> PROFIBUS card: CP5511 and CP5611 (PCI), CP5613 and CP5614 (new PCI card) and MPI interface on PG7xx and its driver software, see interactive catalog CA01, CD-ROM drive <u>System requirements for OM Switch ES Power:</u> SIMATIC: S7, M7, C7, PCS7 STEP 7: Version 5.2 or higher CD-ROM drive	A	3ZS2 311-0CC10-0YA0		1	1 unit	133	On req.

Overview

SIMARIS manager

SIMARIS manager throws light on power flows – from infeed through distribution to loads - in order to permanently reduce the operating costs of power distribution systems. The following points are of particular interest in this connection:

- Costs of operating the power distribution system (maintenance, personnel)
- Power consumption costs (power procurement)
- Costs of the power distribution system (investment costs)

The software can be used as a supplement to visualization systems and has an open architecture for integrating in existing HMI software.

More information can be found on the Internet at:
<http://www.siemens.com/simaris-manager>

Application

SIMARIS manager can be used in all sectors of industry with a high consumption of electrical power – in particular more than 5 GWh per annum or a connected load greater than 2 MW.

Operators and customers in the infrastructure sector where demands are high, e.g. airports and tunnels, can also profit from the advantages of SIMARIS manager.

Benefits

- Central overview of all the power flows in a power distribution system
 - Status of switching elements and protective elements, including the possibility of remote switching
 - System capacity utilization, including all outgoing feeders, with presentation of reserve curves
 - Presentation of all switching operations (central as well as local) by means of switching cycle lists
 - Limit value monitoring with information about overshooting or undershooting in the form of displays, messages, etc.
- Knowledge of the demand profile from the continuous acquisition of power data forms the basis for tariff negotiations and hence for exploiting the advantages of a deregulated power market
- Avoidance of power demand peaks (in 15 minute time frame) with the "load management" function results in a lowering of maximum demand and hence in a reduction of the power level fraction of power supply agreements
- Avoidance of special charges due to violations of the power supply agreement with the "load management" function through close-loop and open-loop control of machinery and equipment
- Detailed information about the amounts and costs of power consumed as the basis for discussing the efficient utilization of power with the "cost-center management" function
- Tapping of more savings potential with additional functions through the continuous acquisition and archiving of power-relevant data

Planning, Design and Management with SIMARIS

SIMARIS manager

Selection and ordering data

Version	DT	Order No.	Price per PU	PU (UNIT, SET, M)	PS*	PG	Weight per PU approx. kg
SIMARIS manager V 1.0							
SIMARIS manager is available in four different variants: Lean, Standard, Advanced and Unlimited. A trial version which contains all functions but can only be run for a limited period of 30 days is also available. The versions Lean, Standard, Advanced und Unlimited do not differ with regard to the functions they contain but with regard to the number of power tags. In other words, the size of the customer's requirement makes the difference. The number of measuring points required and the number of functions used determine the size of the package.							
Trial version, 30 days limited use	B	3ZS2 730-0CC10-0YA7		1	1 unit	133	0,230
Lean version, 256 power tags	B	3ZS2 731-0CC10-0YA0		1	1 unit	133	0,230
Standard version, 1024 power tags	B	3ZS2 732-0CC10-0YA0		1	1 unit	133	0,230
Advanced version, 2048 power tags	B	3ZS2 733-0CC10-0YA0		1	1 unit	133	0,230
Unlimited version, > 2048 power tags	B	3ZS2 734-0CC10-0YA0		1	1 unit	133	0,230
Upgrading with power packs							
If the number of power tags is no longer sufficient for an existing plant, upgrading of the SIMARIS manager package is possible at any time by means of so-called power packs. The corresponding power packs with key diskette can be ordered from your Siemens contact partner. Alternatively the power packs can be conveniently downloaded from the download server and saved on an existing key diskette. To use the download function, SIMARIS manager must be installed. Programs and parameters are retained during the upgrade.							
<u>Delivery from LZN:</u>							
• From version "Lean" to version "Standard"	B	3ZS2 731-0CC10-0YD0		1	1 unit	133	0,230
• From version "Standard" to version "Advanced"	B	3ZS2 732-0CC10-0YD0		1	1 unit	133	0,230
• From version "Advanced" to version "Unlimited"	B	3ZS2 733-0CC10-0YD0		1	1 unit	133	0,230
<u>Procurement from download server</u>							
• From version "Lean" to version "Standard"	B	3ZS2 731-0CE10-0YD0		1	1 unit	133	0,230
• From version "Standard" to version "Advanced"	B	3ZS2 732-0CE10-0YD0		1	1 unit	133	0,230
• From version "Advanced" to version "Unlimited"	B	3ZS2 733-0CE10-0YD0		1	1 unit	133	0,230