

Accessories Miniature Relay PT

- Easy replacement of relays on a densely packed DIN rail
- Socket with logical arrangement of control/load terminals
- High quality rising clamp terminals
- Captive combination terminal screws
- No reduction of protection class or creepage/clearance with plastic retainer
- Plug-in indicator- and protection modules
- Retainer clip with ejection function for relays of 29 or 35mm height
- Second A2 for easier looping
- DIN-rail sockets and accessories: RoHS compliant (Directive 2002/95/EC)
PCB sockets, LED- and protection modules: not RoHS compliant

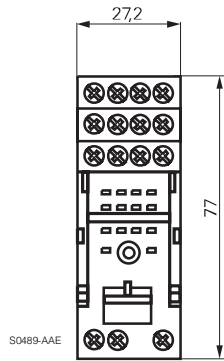


F0263-B

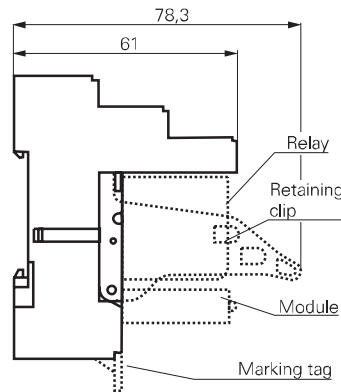
PT DIN-rail socket with screw type terminals PT 78 722 / PT 78 742



F0264-A



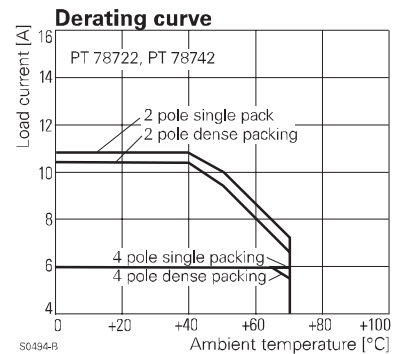
S0489-AAE



Approvals

VDE REG.-Nr. 115719, cULus E135149

| Technical data | 2-pole | 4-pole |
|---|-----------------------|-----------------------|
| Rated current | 12 A | 6 A |
| Limiting continuous current | see derating curve | |
| Rated voltage / max.switching voltage AC | 240/400 VAC | 240 VAC |
| Dielectric strength coil-contact circuit | 2500 V _{rms} | 2500 V _{rms} |
| open contact circuit | 1200 V _{rms} | 1200 V _{rms} |
| adjacent contact circuits | 2500 V _{rms} | 2000 V _{rms} |
| Clearance / creepage coil-contact circuit | ≥ 3/4 mm | ≥ 1.8/3 mm |
| Material group of insulation parts | ≥ IIIa | |
| Insulation to IEC 60664-1 | | |
| Type of insulation coil-contact circuit | basic | |
| open contact circuit | functional | |
| adjacent contact circuits | basic | |
| Rated insulation voltage | 250 V | |
| Pollution degree | 2 ¹⁾ | |
| Rated voltage system | 230/400 V | |
| Overvoltage category | III | |
| RoHS - Directive 2002/95/EC | | |
| Din-rail sockets, retainers and marking tags: | compliant | |
| Degree of protection DIN 40050 | IP20 | |
| Ambient temperature range | -40...+70°C | |
| Terminals | screw | |
| Terminal screw torque acc. IEC 61984 | 0.5 Nm | |
| max. | 0.8 Nm | |



S0494-B

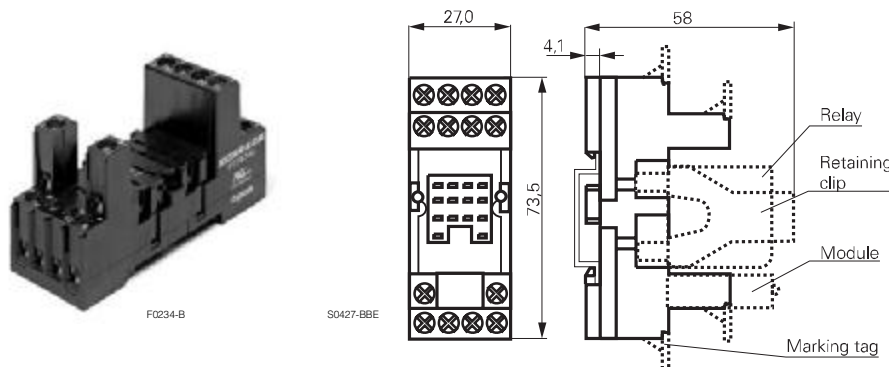
¹⁾ with inserted relay pollution degree 1 in region of contact pins / socket inlets.

| Technical data (Continued) | 2-pole | 4-pole |
|-----------------------------------|-------------------------|--------|
| Wire cross section | | |
| single wire | 1 x 4.0 mm ² | |
| fine wire | 2 x 2.5 mm ² | |
| with bootlace crimp (DIN 46228/1) | 2 x 1.5 mm ² | |
| Insertion cycles | A (10) | |
| Max. Insertion Force total | 100 N | |
| Mounting distance | 0, dense packing | |
| Weight | 44 g | 60 g |
| Packaging unit | 10 pcs | |

| DIN-rail socket with screw type terminals, In/Out arrangement | | |
|---|--|-------------|
| Type | | Part Number |
| PT 78 722 | DIN-rail socket with screw type terminals, In/Out arrangement 2 pole | 0-1415526-1 |
| PT 78 742 | DIN-rail socket with screw type terminals, In/Out arrangement 4 pole | 1-1415526-1 |

| Accessories for PT 78 722, PT 78 742 | | |
|--------------------------------------|---|-------------|
| Type | | Part Number |
| PT 17 021 | Plastic retaining clip, relay height 29/35 mm | 2-1415526-1 |
| PT 28 800 | Metal retaining clip PT, relay height 29 mm | 5-1419111-9 |
| ZG 28 801 | Metal retaining clip, relay height 36 mm | 1-1393162-5 |
| PT 17 040 | Marking tag | 6-1415037-1 |

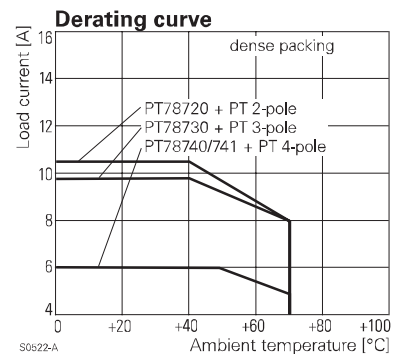
PT DIN-rail socket with screw type terminals PT 78 720/730/740/741



Approvals

REG.-Nr. 115719,
 E135149

| Technical data | 2-pole | 3-pole | 4-pole |
|---|-----------------------|-----------------------|-----------------------|
| Rated current | 12 A | 10 A | 6 A |
| Limiting continuous current | see derating curve | | |
| Rated voltage / max. switching voltage AC | 240/400 VAC | | |
| Dielectric strength coil-contact circuit | 2500 V _{rms} | 2500 V _{rms} | 2500 V _{rms} |
| open contact circuit | 1200 V _{rms} | 1200 V _{rms} | 1200 V _{rms} |
| adjacent contact circuits | 2500 V _{rms} | 2500 V _{rms} | 2000 V _{rms} |
| Clearance / creepage coil-contact circuit | ≥ 3/4 mm | ≥ 2.6/4 mm | ≥ 1.8/3 mm |
| Material group of insulation parts | ≥ IIIa | | |
| Insulation to IEC 60664-1 | | | |
| Type of insulation coil-contact circuit | basic | basic | basic |
| open contact circuit | functional | functional | functional |
| adjacent contact circuits | basic | basic | functional |
| Rated insulation voltage | 250 V | | |
| Pollution degree | 2 | | |
| Rated voltage system | 230/400 V | | |
| Overvoltage category | III | | |



| Technical data (Continued) | 2-pole | 3-pole | 4-pole |
|---|--------|-------------------------|--------|
| RoHS - Directive 2002/95/EC | | | |
| Din-rail sockets, retainers and marking tags: | | compliant | |
| Degree of protection DIN 40050 | | IP20 | |
| Ambient temperature range | | -40...+70°C | |
| Terminals | | screw | |
| Terminal screw torque acc. IEC 61984 | | 0.5 Nm | |
| max. | | 0.8 Nm | |
| Wire cross section | | | |
| single wire | | 1 x 4.0 mm ² | |
| fine wire | | 2 x 2.5 mm ² | |
| with bootlace crimp (DIN 46228/1) | | 2 x 1.5 mm ² | |
| Insertion cycles | | A (10) | |
| Max. Insertion Force total | | 100 N | |
| Mounting distance | | 0, dense packing | |
| Weight | 41 g | 48 g | 55 g |
| Packaging unit | | 10 pcs | |

DIN-rail socket with screw type terminals

| Type | | Part Number |
|------------------|--|-------------|
| PT 78 720 | DIN-rail socket with screw type terminals, 2 pole | 6-1415034-1 |
| PT 78 730 | DIN-rail socket with screw type terminals, 3 pole | 9-1415071-1 |
| PT 78 740 | DIN-rail socket with screw type terminals, 4 pole | 4-1415033-1 |
| PT 78 741 | DIN-rail socket with screw type terminals, 4 pole package with protection diode module | 5-1415034-1 |

Accessories for PT 78 720, PT 78 730, PT 78 740, PT 78 741

| Type | | Part Number |
|------------------|---|-------------|
| PT 17 016 | Plastic retaining clip PT, relay height 29 mm | 5-1415037-1 |
| PT 17 017 | Plastic retaining clip, relay height 34.6 mm | 7-1415037-1 |
| PT 17 018 | Plastic retaining clip, relay height 35.2 mm | 8-1415037-1 |
| PT 17 019 | Plastic retaining clip, relay height 36.6 mm | 9-1415037-1 |
| PT 17 020 | Plastic retaining clip, relay height 37.6 mm | 0-1415038-1 |
| PT 28 800 | Metal retaining clip PT, relay height 29 mm | 5-1419111-9 |
| ZG 28 801 | Metal retaining clip, relay height 36 mm | 1-1393162-5 |
| PT 17 040 | Marking tag | 6-1415037-1 |

LED- and Protection Modules for PT 78 722, PT 78 742 PT 78 720, PT 78 730, PT 78 740

Easy insertion of module into the socket
Wiring in parallel to the coil

| Type | | Part Number |
|-------------------|--|-------------|
| PTM T0 0A0 | EM09 Protection diode (standard, A1+, A2-) | 9-1415036-1 |
| PTM T0 0L0 | EM01 Protection diode (A1-, A2+) | 0-1415037-1 |
| PTM U0 524 | EM02 RC-network 6...60 VAC | 1-1415037-1 |
| PTM U0 730 | EM03 RC-network 110...230 VAC | 2-1415037-1 |
| PTM V0 524 | EM04 Varistor 24 VAC | 3-1415037-1 |
| PTM V0 615 | EM13 Varistor 115 VAC | 6-1415365-1 |
| PTM V0 730 | EM05 Varistor 230 VAC | 4-1415037-1 |

LED

| | | |
|-------------------|---|-------------|
| PTM L0 524 | EM07 red LED 6...24 VDC/VAC | 6-1415036-1 |
| PTM G0 524 | EM11 green LED 6...24 VDC/VAC | 3-1415036-1 |
| PTM L0 024 | EM18 red LED 6...24 VDC w. prot.diode (std, A1+, A2-) | 5-1415036-1 |
| PTM G0 024 | EM12 green LED 6...24 VDC w. prot.diode (std, A1+, A2-) | 2-1415036-1 |
| PTM L1 024 | EM08 red LED 6...24 VDC w. prot. diode (A1-, A2+) | 8-1415036-1 |
| PTM L0 110 | EM19 red LED 48...110 VDC w. prot. diode (A1+, A2-) | 2-1415392-1 |
| PTM L0 730 | EM06 red LED 110...230 VAC | 7-1415036-1 |
| PTM G0 730 | EM10 green LED 110...230 VAC | 4-1415036-1 |

Relay Packages

Complete packages consisting of a relay mounted on a socket: see Relay Package PT



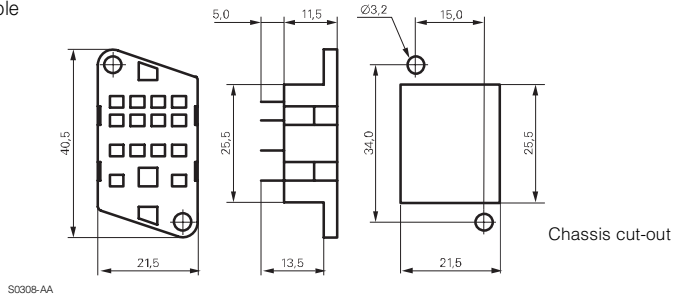
Accessories Miniature Relay PT (Continued)

PT sockets for PCB and with solder terminals PT 78 600/601/602/603/604

PT 78 600, socket with solder terminals, 4-pole



F0132-A

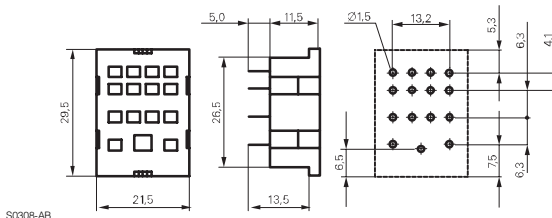


S0308-AA

PT 78 602, PT 78 603, PT 78 604, socket with PCB terminals, 2-, 3- and 4-pole



F0133-A

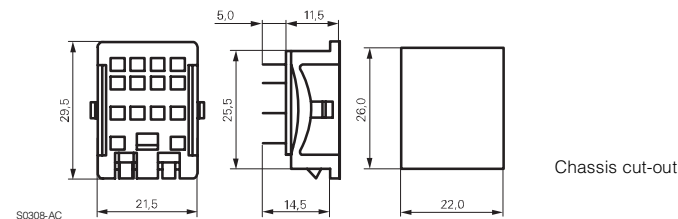


S0308-AB

PT 78 601, socket with solder terminals, 4-pole



F0134-A



S0308-AC

| Technical data | 2-pole | 3-pole | 4-pole |
|---|-----------------------|-----------------------|-----------------------|
| Rated current | 12 A | 10 A | 6 A |
| Rated voltage / max.switching voltage AC | 240/400 VAC | | |
| Dielectric strength coil-contact circuit | 2500 V _{rms} | 2500 V _{rms} | 2500 V _{rms} |
| open contact circuit | 1200 V _{rms} | 1200 V _{rms} | 1200 V _{rms} |
| adjacent contact circuits | 2500 V _{rms} | 2500 V _{rms} | 2000 V _{rms} |
| Clearance / creepage coil-contact circuit | ≥ 3/4 mm | ≥ 2.6/4 mm | ≥ 1.8/3 mm |
| Material group of insulation parts | ≥ IIIa | | |
| Insulation to IEC 60664-1 | | | |
| Type of insulation coil-contact circuit | basic | basic | basic |
| open contact circuit | functional | functional | functional |
| adjacent contact circuits | basic | basic | functional |
| Rated insulation voltage | 250 V | | |
| Pollution degree | 2 | | |
| Rated voltage system | 230/400 V | | |
| Overtoltage category | III | | |

| Technical data (Continued) | 2-pole | 3-pole | 4-pole |
|---------------------------------|---|--------|--------|
| RoHS - Directive 2002/95/EC | compliant as per product date code 0517 | | |
| PT 78 602, PT 78 603, PT 78 604 | non compliant | | |
| PT 78 600, PT 78 601 | | | |
| Degree of protection DIN 40050 | IP20 | | |
| Ambient temperature range | -40...+80°C | | |
| Terminals | pcb, solder terminals | | |
| Insertion cycles | A (10) | | |
| Max. Insertion Force total | 100 N | | |
| Mounting distance | 0, dense packing | | |
| Resistance to soldering heat | 270°C / 10 s | | |
| Weight | 6 g | 7 g | 7 g |
| Packaging unit | 25 pcs | | |

PT sockets

| Type | | Part Number |
|------------------|--------------------------------------|-------------|
| PT 78 600 | Socket with solder terminals, 4 pole | 4-1415043-1 |
| PT 78 602 | Socket with PCB terminals, 2 pole | 5-1415043-1 |
| PT 78 603 | Socket with PCB terminals, 3 pole | 0-1393162-5 |
| PT 78 604 | Socket with PCB terminals, 4 pole | 3-1415043-1 |
| PT 78 601 | Socket with solder terminals, 4 pole | 6-1415043-1 |

Accessories for PT 78 600, PT 78 601, PT 78 602, PT 78 603, PT 78 604

| Type | | Part Number |
|------------------|---|-------------|
| PT 28 802 | Metal retaining clip PT, relay height 29 mm | 0-1393162-1 |
| ZG 28 800 | Metal retaining clip, relay height 36 mm | 1-1393162-4 |