

Accessories Multimode Relay MT

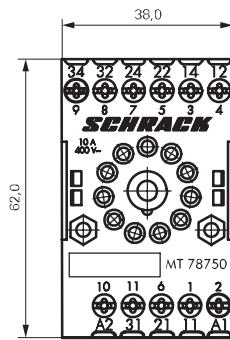
- Snap-on mounting on DIN-rail
- Screw mounting
- Pozidrive screws with rising clamp terminals
- Logical layout of input-/output connections
- White marking area
- Din-rail sockets and accessories: RoHS compliant (Directive 2002/95/EC)
PCB sockets, LED- and function modules: not RoHS compliant



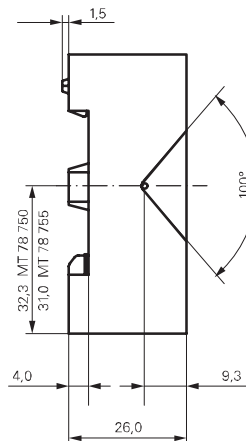
MT DIN-rail sockets with screw-type terminals

MT 78 750 MT3 DIN-rail socket with screw-type terminals, 11-pin
MT 78 755 MT2 DIN rail socket with screw type terminals, 8-pin

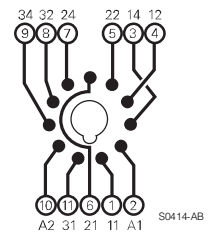
F0103-A



S0311-BA

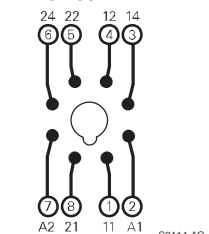


MT 78 750



S0414-AB

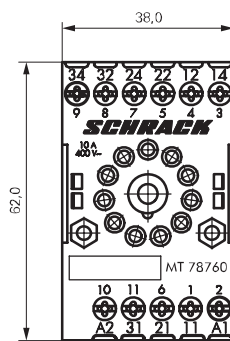
MT 78 755



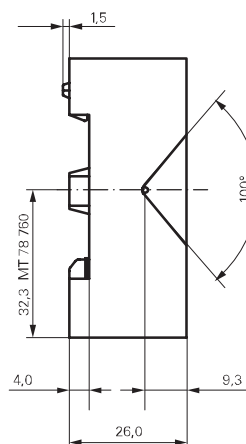
S0414-AC

MT 78 760 MT3 DIN-rail socket with screw-type terminals, 11-pin

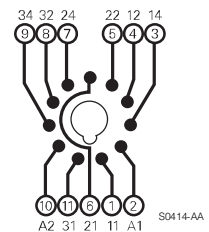
F0103-A



S0311-BB



MT 78 760



S0414-AA

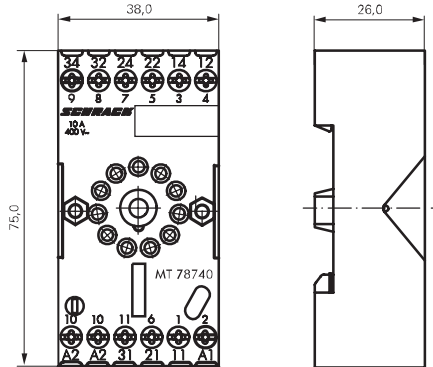
MT 78 740 MT3 DIN-rail socket with screw-type terminals, 11-pin
MT 78 745 MT2 DIN rail socket with screw type terminals, 8-pin

Socket system MT 78 740 and MT 78 745

- 8/11 pin socket for MT2 / MT3
- Double A2 screw for simple further connection of coil supply



F0200-A



S0366-A

Approvals

VDE REG.-Nr. 6182, c **UL** us E135149

Technical data		MT 78 750/755/760/740/745
Rated current		10 A
Rated voltage / max.switching voltage AC		240/400 VAC
Dielectric strength coil-contact circuit	open contact circuit	2500 V _{rms}
	adjacent contact circuits	1500 V _{rms}
		2500 V _{rms}
Clearance / creepage coil-contact circuit		≥ 2.8/4 mm
Material group of insulation parts		≥ IIIa
Insulation to IEC 60664-1		
Type of insulation coil-contact circuit		basic
open contact circuit		functional
adjacent contact circuits		basic
Rated insulation voltage		250 V
Pollution degree		2
Rated voltage system		230/400 V
Overvoltage category		III
RoHS - Directive 2002/95/EC		
DIN-rail sockets and retainers:		compliant
Degree of protection DIN 40050		IP20
Ambient temperature range		-20...+80°C
Terminals		screw
Terminal screw torque acc. IEC 61984		0.8 Nm
max.		1.0 Nm
Wire cross section		
single wire		2 x 2.5 mm ²
fine wire		2 x 2.5 mm ²
with bootlace crimp (DIN 46228/1)		2 x 1.5 mm ²
Insertion cycles		A (10)
Max. Insertion Force total		100 N
Mounting distance		0, dense packing
Weight MT 78 750/760		
MT 78 755		54 g
MT 78 740		47 g
MT 78 745		62 g
MT 78 745		56 g
Packaging unit		25 pcs

DIN-rail sockets with screw-type terminals

Type		Part Number
MT 78 750	DIN-rail socket with screw-type terminals 11-pin	0-1415035-1
MT 78 755	DIN-rail socket with screw-type terminals 8-pin	3-1415035-1
MT 78 760	DIN-rail socket with screw-type terminals 11-pin	8-1415034-1
MT78 740	DIN-rail socket with screw-type terminals, 11-pin	8-1393163-3
MT78 745	DIN-rail socket with screw-type terminals, 8-pin	8-1393163-4

Datasheet
 Issued 2005/08
 www.tycoelectronics.com
 www.schrackrelays.com

Dimensions are in mm unless otherwise specified and are shown for reference purposes only.

Product specification according to IEC 61810-1. Product data, technical parameters, test conditions and

processing information only to be used together with the 'Definitions' at schrackrelays.com in the

'Schrack' section. Specifications subject to change.

Accessories for MT 78 750, MT 78 755, MT 78 760, MT 78 740, MT 78 745

Type		Part Number
MT 28 800	Metal retaining clip MT	8-1393163-0

LED and Protection modules for MT 78 740, MT 78 745

Type		Part Number
MTM T0 0A0	Protection diode 1N4007 (A1+, A2-)	7-1393163-6
MTM U0 524	RC-network 6...24 VAC	7-1393163-7
MTM U0 730	RC-network 110...230 VAC	7-1393163-8

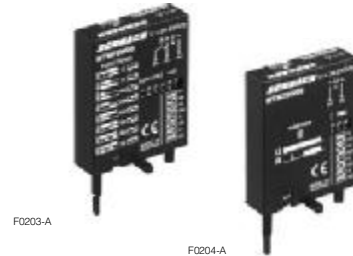
LED

MTM L0 024	red LED 24 VAC / VDC	7-1393163-4
MTM G0 024	green LED 24 VAC / VDC	6-1419149-6
MTM L0 730	red LED 110...230 VAC / VDC	7-1393163-5
MTM G0 730	green LED 110...230 VAC / VDC	6-1419149-7



Function modules for MT 78 740, MT 78 745

Type		Part Number
MTM Z0 W00	Delay ON	7-1393163-9
MTM F0 W00	Multifunction	7-1393163-3



Technical data - Function modules

Nominal voltage	24...240 VDC / VAC
Mains frequency	48...63 Hz
Precision of time setting	+ 0,5 %
Readiness for repetition	≤ 0,5 % or 5 ms
Influence of temperature	≤ 0,1 %/°C
Time range switchable	0,05s...240h in 8 ranges
Ambient temperature	-25...+55 °C

Function modules for MT 78 740, MT 78 745

Function	
Delay ON	
Delay OFF	
single shot leading edge	
single shot trailing edge	
Delay ON triggered by signal contact	
single shot	
flasher starting with pause	
flasher starting with pulse	

